

Salina Split Level

🏠4 🚗2 🏠2 🚗2

THE SALINA IS A STUNNING EXAMPLE OF INSPIRED LIVING, CRAFTED WITH PRECISION AND ELEGANCE.



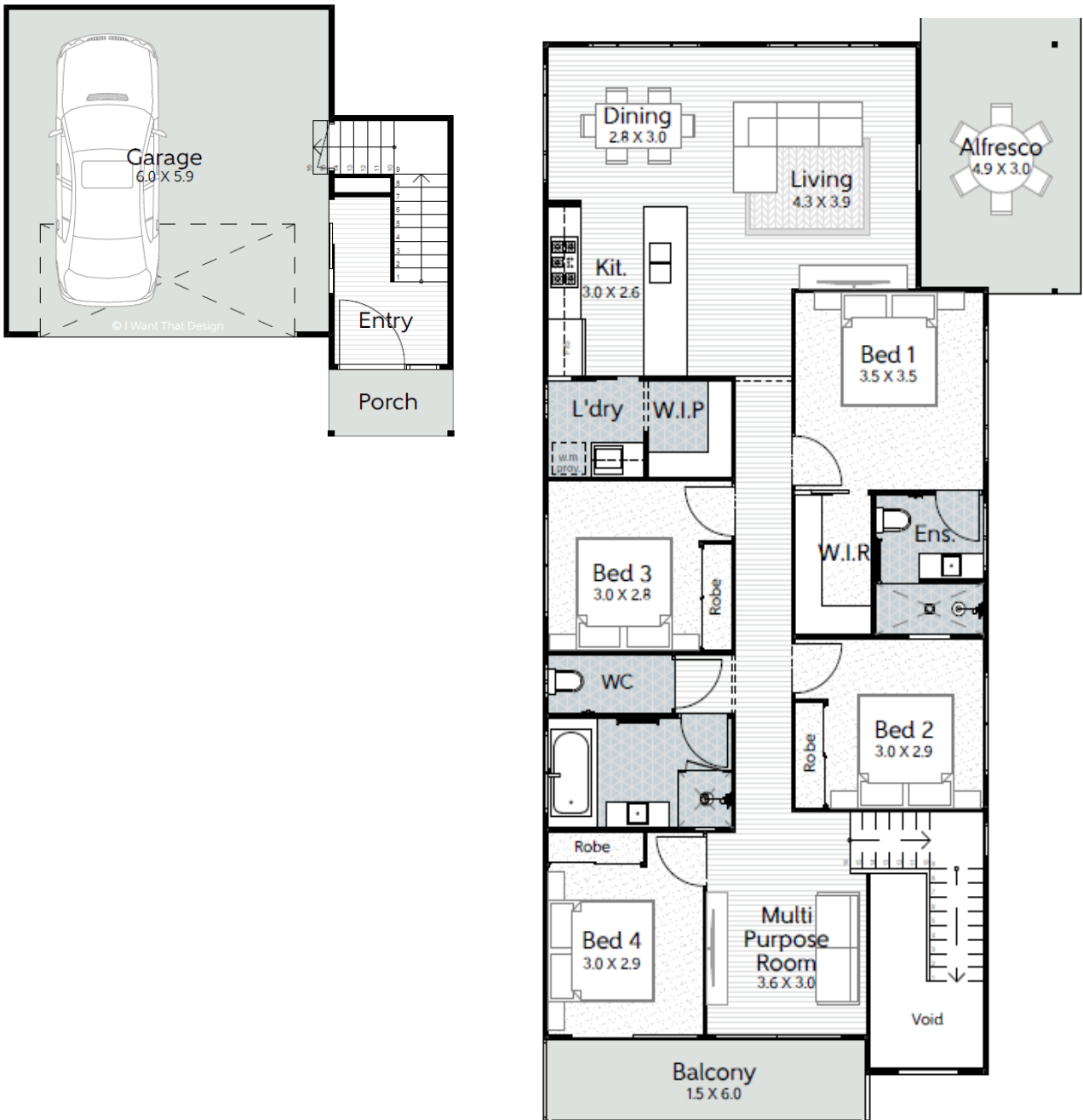
AVIA
HOMES

Salina Split Level

🚗4 🏠2 🚗2 🚗2

LOT: 12.5M+ SLOPING BLOCK

House area: 217.40m² | House width: 10.05m | House length: 20.04m



HOMES

